


Welcome to...

# BMS Squares


A Game of X's and O's



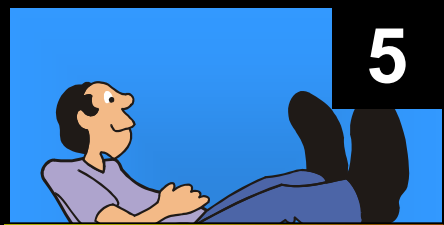
**S  
T  
A  
R  
R  
I  
N  
G**


1   
Dew  atum

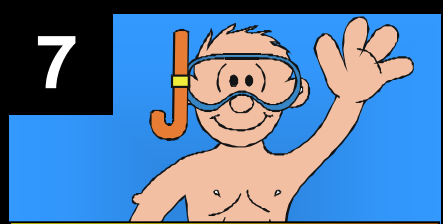
2   
Anita  nkiss

3   
Iva  Vinn


4   
Crav  nfood

5   
Lee  iately

6   
Phi  Up

7   
Sand  aches

8   
Seyn  loney

9   
Ima  tiful

# Scoreboard

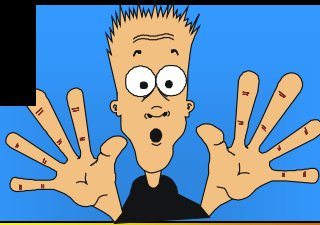
X

O

Click Here if  
X Wins

Click Here if  
O Wins

1



2



3



4



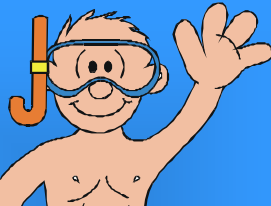
5



6



7



8



9



1



**What was the  
purpose of the  
Headright System?**

1



**It distributed Indian  
lands to the new  
settlers.**

2



**What scandal took place when Georgia's governor and some legislators were bribed to sell 50 million acres of public land to private developers at less than two cents an acre?**

2



# Yazoo Land Fraud

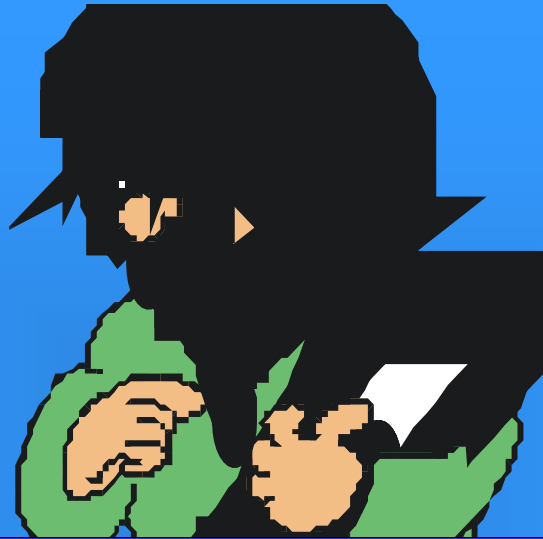
3



**In the mid-1800s,  
Georgia's main  
railroad company  
was the?**



3



# Western and Atlantic Railroad

4



**What were the  
original names of  
Atlanta?**

4



# Terminus and Marthasville

5



**The most important  
mechanical  
invention to  
Georgia's economy  
in the early 1800s  
was the**

5



**cotton gin**

6

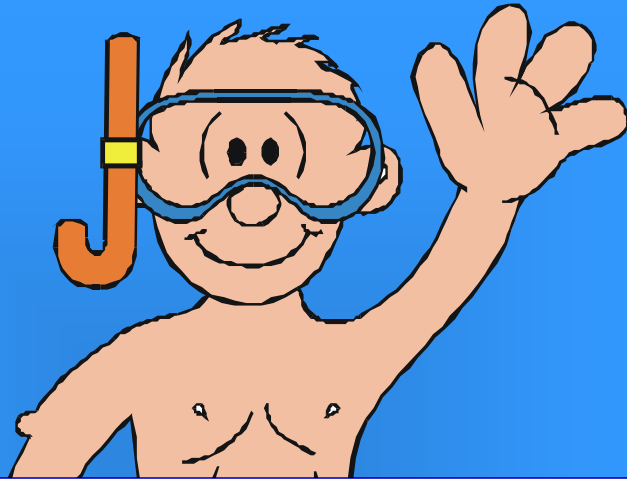


**Which statement  
BEST describes a  
“land grant  
university” like  
UGA?**



**The land for the  
college was  
donated by the  
federal  
government.**

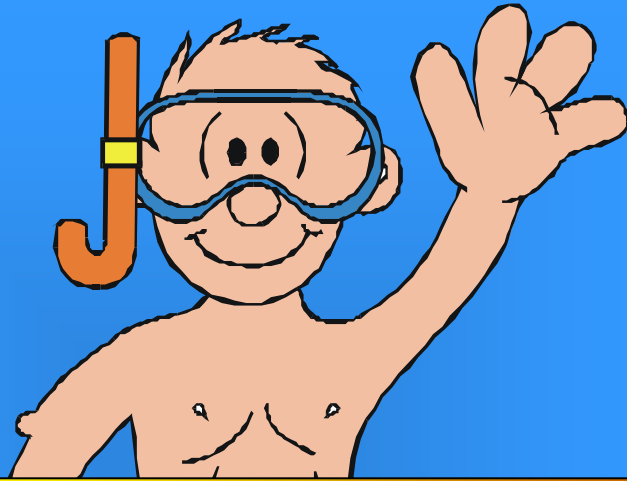
7



**What was George Gist's (Sequoyah) major contribution to the Cherokee culture?**



7



He developed a syllabary so the Cherokee could have a written language.

8



**The first Native  
American  
newspaper was  
the**

8



*Cherokee  
Phoenix*

9



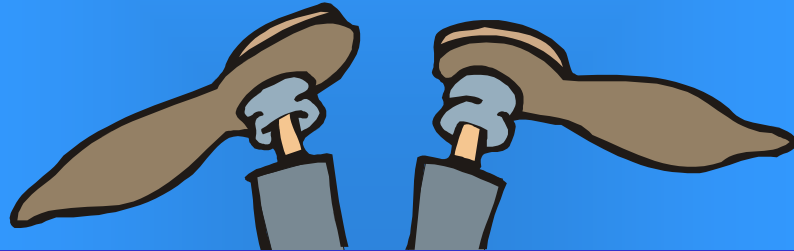
**The permanent  
Cherokee capital  
was located in**

9



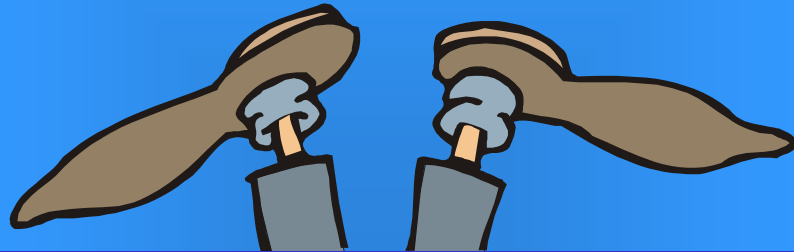
# New Echota

10



**Who participated  
in the Treaty of  
Indian Springs,  
which ceded the  
last Creek lands in  
Georgia?**

10



**Governor George  
Troup  
and  
Chief McIntosh**



**Which discovery  
led to the final  
Indian removal  
from Georgia?**





# The discovery of gold in Dahlonega

12



*What nickname  
was given to the  
forced removal of  
the Cherokee from  
Georgia?*

12



## The Trail of Tears

13



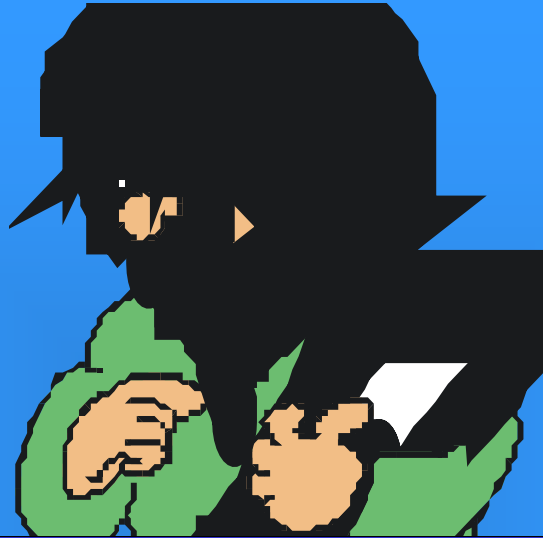
**From the colonial era until Reconstruction, the capital of Georgia was moved many times in response to what factor?**

13



**the changing  
population center  
of the state**

14



**Why was Louisville  
chosen as  
Georgia's capital in  
1786?**

14



**It was more  
centrally located.**

15



**By 1860, the two  
largest church  
denominations in  
Georgia were**

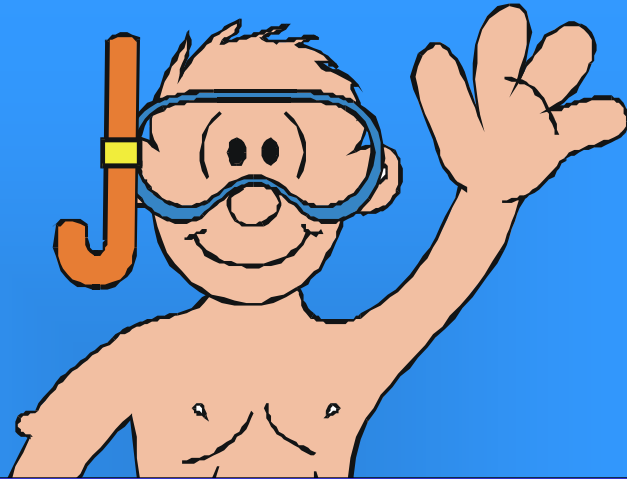


15



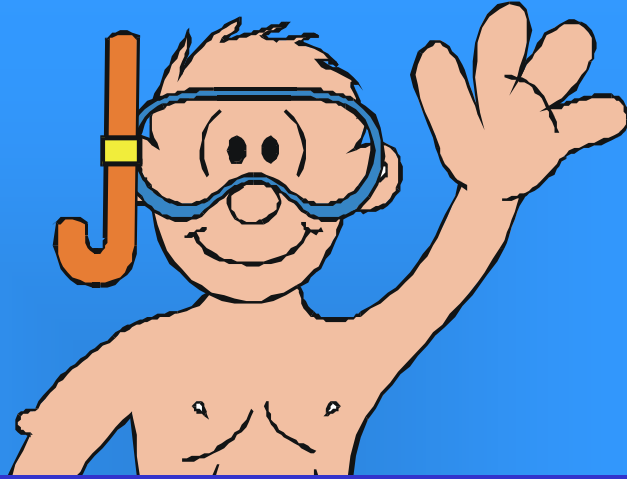
**Baptist &  
Methodist**

16



**In the early 1800s,  
Georgia's policy of  
giving land to citizens  
through lotteries was  
meant to**

16



**Encourage  
families to settle  
in the frontier**

17



**Who was the Chief Justice of the US Supreme Court who ruled that Cherokee territory was not subject to state law?**

17



**John Marshall**

18



**Who was the chief of the  
Cherokees who took a  
petition to Congress  
protesting the Cherokee  
removal from their land?**

18



**John Ross**

19



**Who was the US  
President who  
forced the  
Cherokees to move  
west to Oklahoma?**



19



**Andrew Jackson**

20



**Who was the Creek  
leader in the Oconee  
War between the  
Creek and the Georgia  
pioneers?**

20



**Alexander  
McGillivray**



**After the  
Revolutionary War,  
what were Georgia's  
major crops?**

21



**Cotton  
& Tobacco**

22



The main reason that the United States declared war on Great Britain in 1812 was the United States' desire to

22



**seize lands in the  
west and Canada**

23



**What national  
“symbol” came out  
of the War of 1812?**



23



**“The Star-  
Spangled Banner”**

24



**How did the cotton gin influence the growth of slavery in the South?**

24



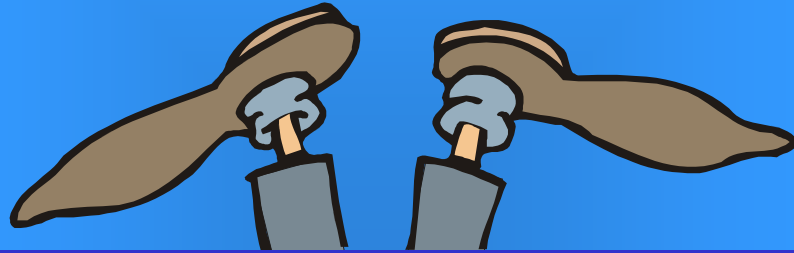
**It increased profits  
from growing  
cotton.**

25



**What natural boundaries  
marked the eastern and  
western boundaries of the  
Louisiana Purchase?**

25



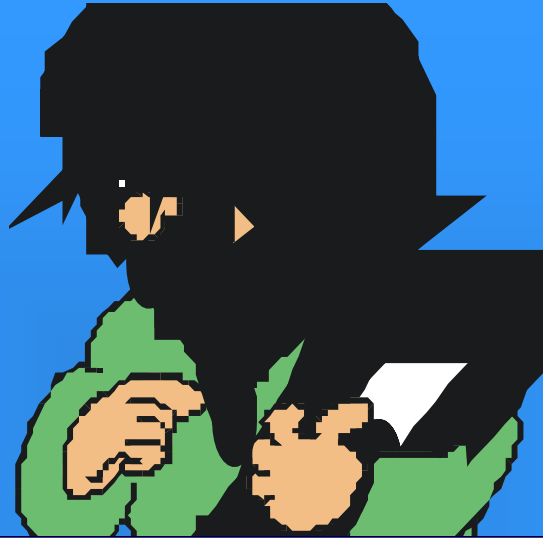
# Rocky Mountains & Mississippi River

26



**What two Georgia cities served as the state's capital during the late 1700's?**

26



# Savannah & Augusta

27



**Why did Georgia give  
up land claims in  
what is now  
Mississippi and  
Alabama?**



27



**The federal government  
paid millions to settle the  
Yazoo Land Fraud and  
disputed Georgia's right  
to land.**



**Who was involved  
in the Oconee  
War?**

28



# Settlers and the Creek Indians

29



**What led to  
America's change  
to a "market  
economy"?**

29



# The development of commercial agriculture

30



**What legislation allowed Georgia to push the Creek and the Cherokee out of the state and to seize their lands?**

30



# The Indian Removal Act of 1830



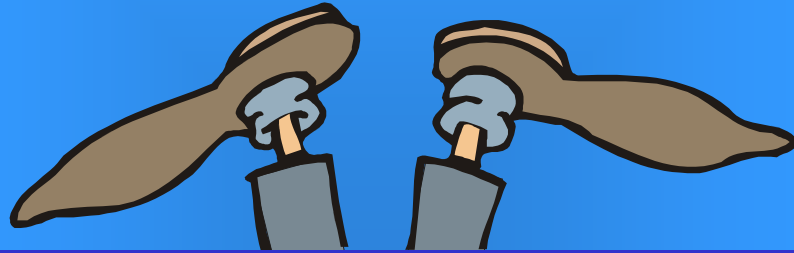
**Name the inventions that contributed directly to the industrialization of the United States during the period of westward expansion.**





**Cotton gin,  
mechanical  
reaper, water-  
powered spinning  
machine**

**32**



**The two major  
Indian tribes in  
Georgia were**

32



# Creeks and Cherokees

**33**



**Between 1805 and 1832, Georgia gave away 30 million acres of land west of the Oconee River. What method was used to distribute the land?**

33



# Land Lottery

34



All the trails along which the Indians were taken ended in the Indian Territory, which is mainly in the present-day state of

34



Oklahoma



**Before railroads were available, Georgia's farmers moved their products to markets by**



35



**Riverboats, ferries,  
and wagon trains**

36



**What was the most  
damaging result of  
the Yazoo Land Fraud  
in Georgia?**

36



**Georgia lost money as  
well as lands west of  
the Chattahoochee  
River**

37



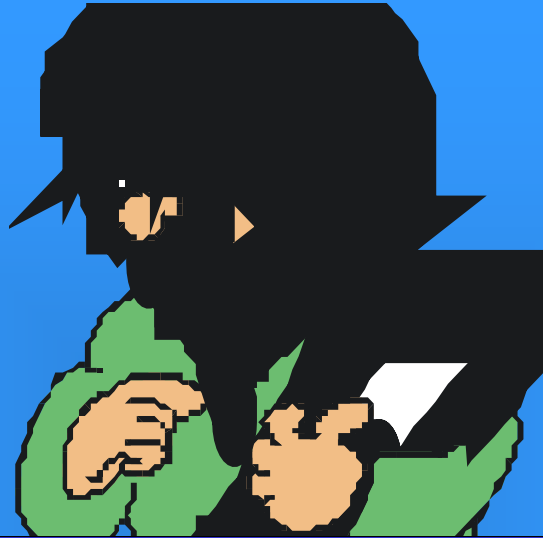
**The incident most  
directly  
responsible for  
the Creek War was  
the?**

37



## Red Sticks attack on Fort Mims

38



**Which states made  
up the Cherokee  
Nation?**

38



**North Carolina,  
Georgia,  
Tennessee, and  
Alabama**



**All of the trails along which the Indians were taken ended in the Indian Territory, which is mainly in the present-day state of**



39



Oklahoma

40



**TRUE OR FALSE?**

**The Indians were  
taken along several  
trails to a new  
location.**

40



TRUE

41



**All the Indians  
traveled by  
covered wagon.**

41



**FALSE**

34



**Some of the  
Indians traveled  
along the  
Mississippi and  
Arkansas rivers.**

34



TRUE



**Many of the  
Indians traveled  
on a route that  
took them through  
Tennessee.**



35



TRUE

X

X

X

X

CONGRATULATIONS!

X

X

X

X